



TEREX® | BID-WELL

5000

HEAVY HIGHWAY PAVER



Specifications:

Operating Weight	11,966 lbs / 5,427 kg
Engine Output	38.9 hp / 29 kw
Finishing Roller Length	5.8 ft / 1.7 m
Truss Size	48 in / 1.2 m

Features:

- ▶ Maximum machine length of 72 ft / 21.9 m
- ▶ Power machine raising and lowering
- ▶ Internal concrete vibration system
- ▶ Patented Rota-Vibe® vibration system
- ▶ Power crown adjustment

WORKS FOR YOU.™

SPECIFICATIONS

POWER UNIT

Standard: Kubota diesel engine

Dry weight	242.5 lbs / 110 kg
Gross horsepower at 3,600 rpm	34 hp / 25 kw
Cooling	Liquid
Emissions	2011 Tier 4 EPA

CARRIAGE

Standard: Kubota diesel engine	38.9 hp / 29 kw
Finishing rollers	Dual 5 ft 10 in / 1.78 m
Strike off auger	Dual 8 in / 20 cm diameter
Rota-Vibe® drum	15 in / 38 cm

MACHINE FRAME

All welded steel frame for maximum strength with minimum weight

Truss depth	48 in / 1.2 m
Standard machine length	30 ft / 9.2 m
Maximum machine length	72 ft / 21.9 m
Maximum leg span	69 ft / 21.03 m
Minimum paving width	12 ft / 3.6 m
Maximum paving width	68 ft / 20.7 m

MACHINE LEGS

Standard hydraulically powered machine raising and lowering

Leg diameter	6 in / 15 cm
Maximum leg extension range	54.5 in / 1.38 m

FLUID CAPACITY

Power unit hydraulics	25 g / 94.6 L
Power unit fuel	26 g / 98.4 L
Carriage hydraulics	13.3 g / 50.3 L
Carriage fuel	20 g / 75.7 L



CARRIAGE

The 5000 paving carriage performs 5 functions to help finish your concrete to job specifications:

- The internal concrete vibration system vibrates the concrete ahead of the augers
- The augers forward of the carriage trim excess concrete
- The patented Rota-Vibe® system consolidates the top 2.75 in / 6.9 cm of concrete ahead of the rollers
- The paving rollers finish the concrete
- The drag pan system seals and textures the road or runway

OPERATOR'S CONSOLE

The operator's console on the 5000 Paver offers easy access to machine and carriage function controls. The operator has access to machine travel speed, carriage travel speed, a manual override shift for automatic carriage reversing, internal concrete vibration system controls and power up and down legs, all standard on the 5000. Most accessories can also be controlled from the operator's console including power leg widening, Hydra-Mation® stringline elevation sensing and the carriage/drag pan fogging system.

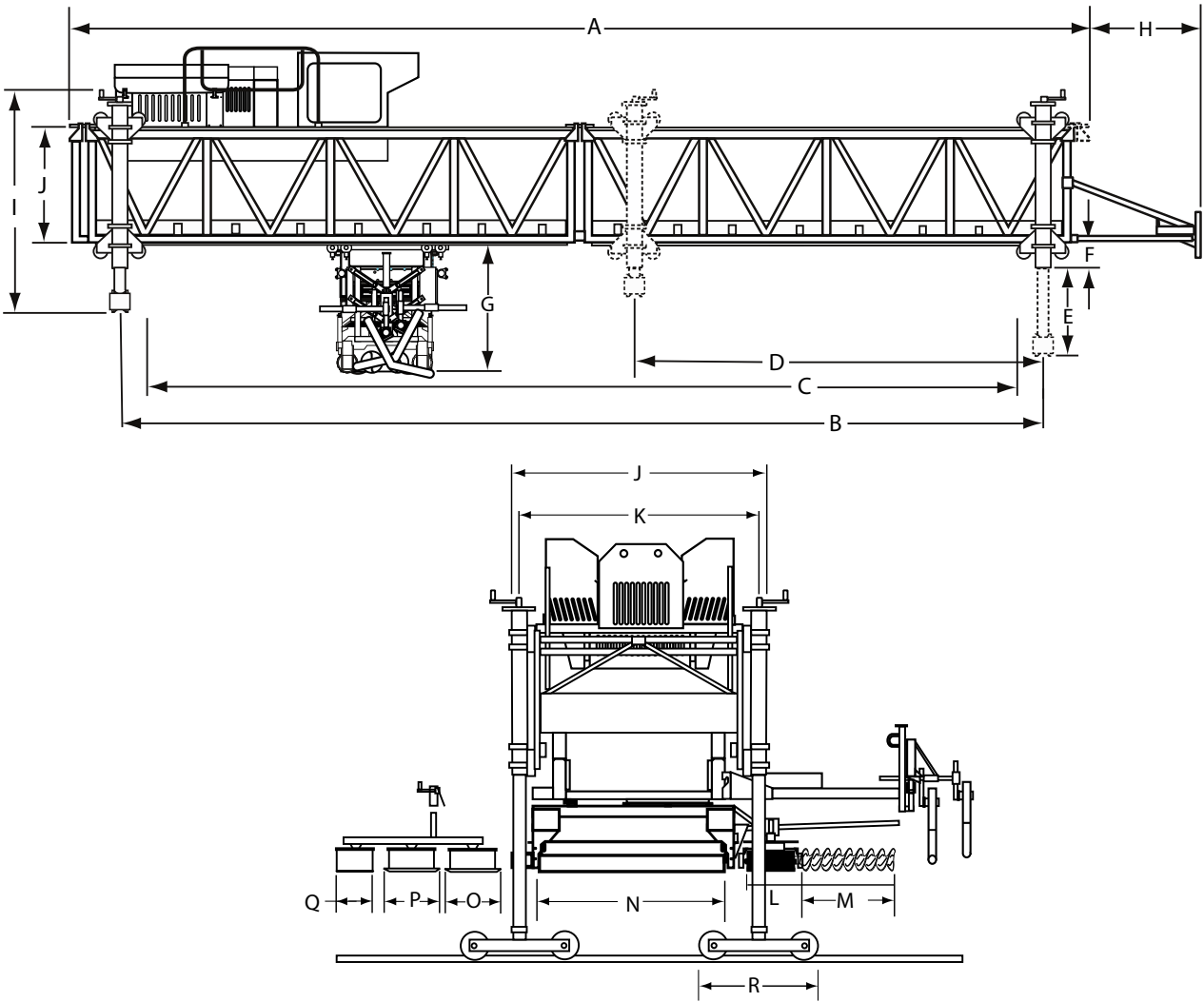
ON THE HIGHWAY OR THE RUNWAY

The 5000 paver isn't just a heavy highway and road paver. It can be effectively used to pave airport aprons, runways and taxiways. Able to handle paving to depths of up to 30 in / 76.2 cm coupled with the ease of transport, setup, adjustment and the ability to pave oddly shaped slabs, the 5000 is a contender for any airport project. When adding a Terex Bid-Well Vertical Vibration System to the 5000 paver the result is unprecedented accuracy in profilograph testing and density in concrete core samples.



TEREX | BID-WELL

STANDARD 5000 ROLLER PAVER



DIMENSIONS AND WEIGHTS*

Dimensions				Weights	
A	30.5 ft / 9.29 m	J	8 ft 4 in / 2.54 m	Operating Weight	11,966 lbs / 5,427.7 kg
B	27.5 ft / 8.5 m	K	7.58 ft / 2.31 m	Carriage	2,901 lbs / 1,315.9 kg
C	26.5 ft / 8.07 m	L	1.25 ft / 38 cm	Power Unit	3,719 lbs / 1686.9 kg
D	15 ft / 4.57m	M	3.3 ft / 1.02 m	Bogie Wheel (qty 4)	560 lbs / 254 kg
E	13.6 ft / 4.17 m	N	5.8 ft / 1.78 m		
F	54.5 in / 1.38 m	O	2.58 ft / 78.7 cm		
G	58 in / 1.4 m	P	2.58 ft / 78.7 cm		
H	7 ft / 2.13 m	Q	1.6 ft / 50.8 cm		
I	1.92 ft / 58 cm	R	4 ft / 1.18 m		

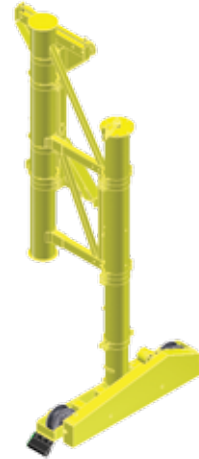
*Standard machine is defined as a 30.5 ft / 9.29 m machine consisting of two 15 ft / 4.5 m truss sections, power unit, carriage, four standard 6 in / 15 cm legs and standard leg plates. Terex Bid-Well is not responsible for miscalculated wheel load weights based on the above information. For the most current wheel load weight calculators and machine weights please contact the Terex Bid-Well Service Department at 1-800-843-9824.

ACCESSORIES

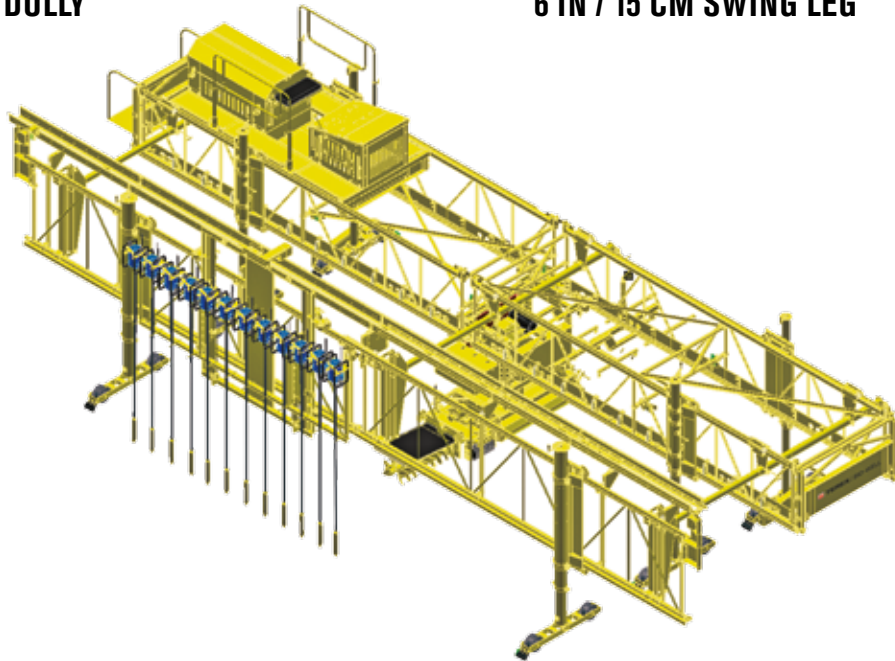
Terex Bid-Well offers a large selection of options and accessories for the 5000 model roller paver ranging from power crown adjustment and carriage foggers to weight distribution systems and traffic machine ends for skewed paving. Shown are just a few of the options available for contractors to fit their 5000 to meet any job specification. For more information on available options and accessories for the 5000 model roller paver contact your regional sales representative or the Terex Bid-Well Service Department at 1-800-843-9824.



4 WHEEL TRAVEL DOLLY



6 IN / 15 CM SWING LEG



VERTICAL VIBRATION SYSTEM

www.bid-well.com

Effective Date: June 2011. Product specifications and prices are subject to change without notice or obligation. The photographs and/or drawings in this document are for illustrative purposes only. Refer to the appropriate Operator's Manual for instructions on the proper use of this equipment. Failure to follow the appropriate Operator's Manual when using our equipment or to otherwise act irresponsibly may result in serious injury or death. The only warranty applicable to our equipment is the standard written warranty applicable to the particular product and sale and Terex makes no other warranty, express or implied. Products and services listed may be trademarks, service marks or trade-names of Terex Corporation and/or its subsidiaries in the USA and other countries. All rights are reserved. Terex is a registered trademark of Terex Corporation in the USA and many other countries. Copyright 2011 Terex Corporation.

Terex Bid-Well PO Box 97, Canton, SD 57013 USA
Tel +1 605 987 2603 Fax +1 605 987 2605 www.bid-well.com



TEREX | **BID-WELL**